



ON-TREND.... THOUGHTFULLY DESIGNED....



CHAIR DESIGN: VX MEMO COLLECTION  
SOFA AND TUB

INDENT - LONGER LEAD TIME: AVAILABLE WITH CAMIRA - ERA FABRICS AND HOUSE VINYL



CHAIR DESIGN: VX MEMO COLLECTION

MEMO TUB: 790W X 760D X 830H (MM)

MEMO SOFA: 1500W X 760D X 830H (MM)

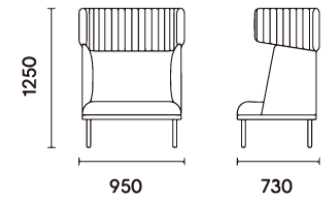


INDENT - LONGER LEAD TIME: AVAILABLE WITH CAMIRA - ERA FABRICS AND HOUSE VINYL



## CHAIR DESIGN: VX MEMO COLLECTION

MEMO TUB WRAP 950: 950W X 730D X 1250H (MM)

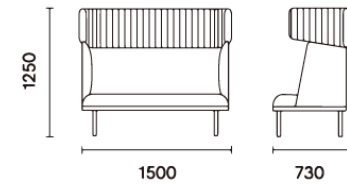


INDENT - LONGER LEAD TIME: AVAILABLE WITH CAMIRA - ERA FABRICS AND HOUSE VINYL



CHAIR DESIGN: VX MEMO COLLECTION

MEMO SOFA WRAP: 1500W X 730D X 1250H (MM)



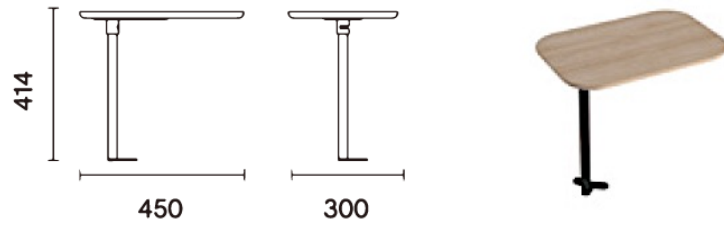
INDENT - LONGER LEAD TIME: AVAILABLE WITH CAMIRA - ERA FABRICS AND HOUSE VINYL



## CHAIR DESIGN: VX MEMO COLLECTION

ACCESSORY FOR MEMO SOFA AND MEMO SOFA WRAP

FITTED ACCESSORY FOR SOFA :  
SOFA TABLET 450W X 300D X 414H (MM)



INDENT - LONGER LEAD TIME: AVAILABLE WITH CAMIRA - ERA FABRICS AND HOUSE VINYL



CHAIR DESIGN: VX MEMO COLLECTION  
MEMO FABRIC: MINA (REQUIRED FOR FEATURE STITCHING)  
PLEASE CONTACT OUR OFFICE FOR VINYL UPHOLSTERY

**MINA** **GRADE B**

*Composition: 100% Polyester*

*Abrasion: ≥ 60,000s*

*Application: Seating*



MIN-02



MIN-41



MIN-18



MIN-20



MIN-40



MIN-36



MIN-21



MIN-16



MIN-23

STRUCTURE :

STURDY SOLID TIMBER FRAME / WITH FEET ADJUSTMENT

METAL SUPPORT FRAME POWDER COAT BLACK

HIGH DENSITY FOAM

INDENT - LONGER LEAD TIME USING CAMIRA - ERA FABRICS (REFER FOLLOWING PAGES)



**Allowance**  
CSE38 NEW



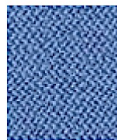
**Memo**  
CSE46 NEW



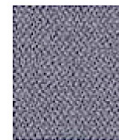
**Quota**  
CSE41 NEW



**Youth**  
CSE39 NEW



**Chapter**  
CSE08



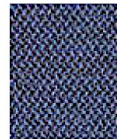
**Forecast**  
CSE11



**Prompt**  
CSE45 NEW



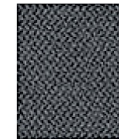
**Perennial**  
CSE12



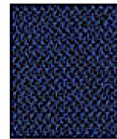
**Range**  
CSE42 NEW



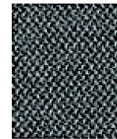
**Late**  
CSE43 NEW



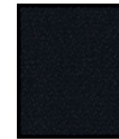
**Present**  
CSE13



**Maturity**  
CSE40 NEW



**Elapse**  
CSE44 NEW



**Forward**  
CSE14

## FABRIC CAMIRA ERA

### Composition

100% Polyester  
Non metallic dyestuffs

### Environment

Certified to OEKO-TEX® Standard 100

### Width

140 cm minimum

### Weight

320 g/m<sup>2</sup> ±5% (448 g/lin.m ±5%)

### Abrasion Resistance\*

Heavy duty / 10 year guarantee  
Independently certified to ≥100,000  
Martindale cycles

### Flammability

AS 1530.3 , ISO5660  
EN 1021 - 1 (cigarette)  
EN 1021 - 2 (match)  
BS 7176 Low Hazard  
EN 13501-1 Adhered Class B, s1, d0  
EN 13501-1 Un-adhered Class C, s1, d0  
*Note: Flammability performance is dependent on components used. This range has been tested using 34-38 kg/m<sup>3</sup> CMHR foam unless otherwise stated.*

### Light Fastness

5 (ISO 105 - B02)

### Fastness to Rubbing

Wet: 4, Dry: 4 (ISO 105 - X12)

### Cleaning

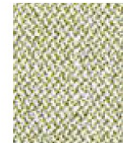
Washable to 60°C. Vacuum regularly.  
Wipe clean with a damp cloth or shampoo  
using proprietary upholstery shampoo.



PLEASE NOTE CAMIRA ERA WILL NOT ALLOW FOR RIB STITCHING, A FEATURE OF THE MEMO TUB AND SOFA.



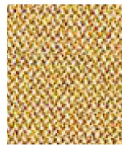
**Transition**  
CSE30 NEW



**Analogue**  
CSE33 NEW



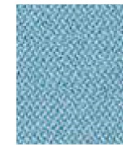
**Notation**  
CSE36 NEW



**Splitsecond**  
CSE31 NEW



**Endurance**  
CSE34 NEW



**Aeon**  
CSE20



**Lifetime**  
CSE03



**Period**  
CSE07



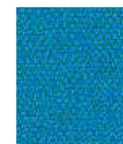
**Rest**  
CSE37 NEW



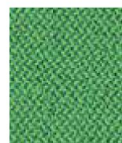
**Occasion**  
CSE32 NEW



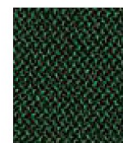
**Timelapse**  
CSE16



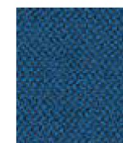
**Everlasting**  
CSE10



**Event**  
CSE18



**Signature**  
CSE35 NEW



**Stage**  
CSE15



## FABRIC CAMIRA ERA

### Composition

100% Polyester  
Non metallic dyestuffs

### Environment

Certified to OEKO-TEX® Standard 100

### Width

140 cm minimum

### Weight

320 g/m<sup>2</sup> ±5% (448 g/lin.m ±5%)

### Abrasion Resistance\*

Heavy duty / 10 year guarantee  
Independently certified to ≥100,000  
Martindale cycles

### Flammability

AS 1530.3, ISO5660  
EN 1021 - 1 (cigarette)  
EN 1021 - 2 (match)  
BS 7176 Low Hazard  
EN 13501-1 Adhered Class B, s1, d0  
EN 13501-1 Un-adhered Class C, s1, d0  
*Note: Flammability performance is dependent on components used. This range has been tested using 34-38 kg/m<sup>3</sup> CMHR foam unless otherwise stated.*

### Light Fastness

5 (ISO 105 - B02)

### Fastness to Rubbing

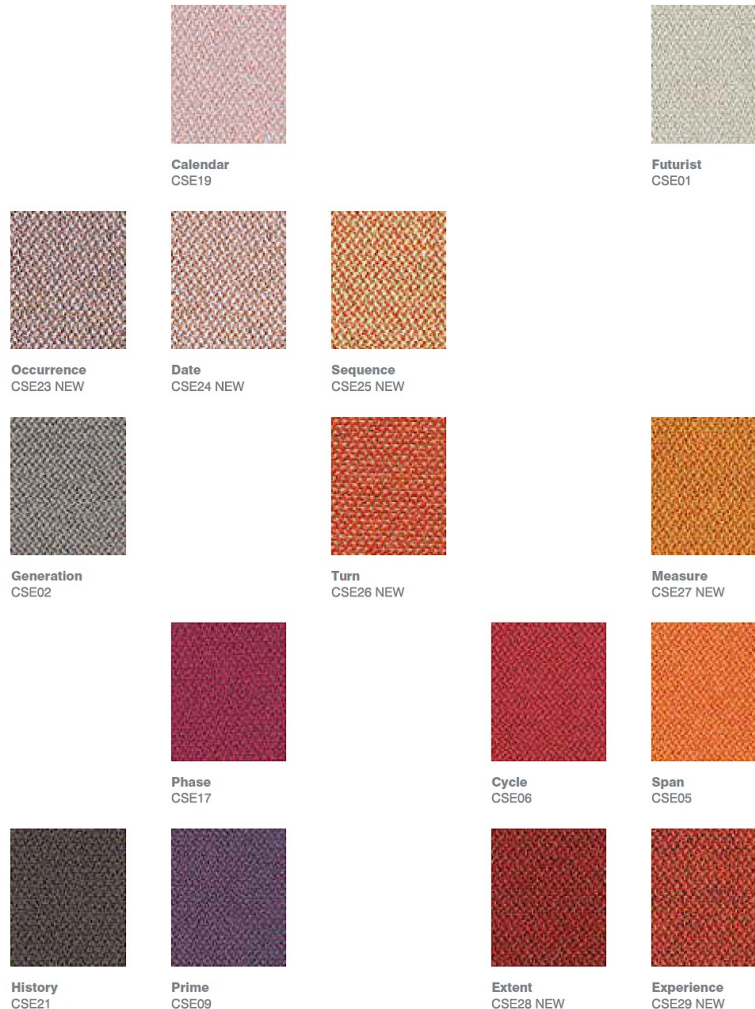
Wet: 4, Dry: 4 (ISO 105 - X12)

### Cleaning

Washable to 60°C. Vacuum regularly.  
Wipe clean with a damp cloth or shampoo  
using proprietary upholstery shampoo.

PLEASE NOTE CAMIRA ERA WILL NOT ALLOW FOR RIB STITCHING, A FEATURE OF THE MEMO TUB AND SOFA.





## FABRIC CAMIRA ERA

### Composition

100% Polyester  
Non metallic dyestuffs

### Environment

Certified to OEKO-TEX® Standard 100

### Width

140 cm minimum

### Weight

320 g/m<sup>2</sup> ±5% (448 g/lin.m ±5%)

### Abrasion Resistance\*

Heavy duty / 10 year guarantee  
Independently certified to ≥100,000  
Martindale cycles

### Flammability

AS 1530.3, ISO5660  
EN 1021 - 1 (cigarette)  
EN 1021 - 2 (match)  
BS 7176 Low Hazard  
EN 13501-1 Adhered Class B, s1, d0  
EN 13501-1 Un-adhered Class C, s1, d0  
*Note: Flammability performance is dependent on components used. This range has been tested using 34-38 kg/m<sup>3</sup> CMHR foam unless otherwise stated.*

### Light Fastness

5 (ISO 105 - B02)

### Fastness to Rubbing

Wet: 4, Dry: 4 (ISO 105 - X12)

### Cleaning

Washable to 60°C. Vacuum regularly.  
Wipe clean with a damp cloth or shampoo  
using proprietary upholstery shampoo.



PLEASE NOTE CAMIRA ERA WILL NOT ALLOW FOR RIB STITCHING, A FEATURE OF THE MEMO TUB AND SOFA.