

BY VYSTAN

COLLECTION OF FOCUS CHAIRS FRESH COLORWAY / FRESH DESIGN

FOCUS CHAIR



COLLECTION OF FOCUS CHAIRS
POLISHED - SLED AND FOUR LEG
SEMI-STACK

FOCUS CHAIR



HOUSE FABRIC IS CAMIRA ERA. HOUSE VINYL IS PU-LEATHER-LOOK.
CHOICE OF WHITE OR BLACK SEAT SHELL
LEAD TIME IS 8 - 16 WEEKS DEPENDING ON ORDER CYCLE

VYSTAN INTERIORS: T 89417774 | E: SALES@VYSTAN.COM

COLLECTION OF FOCUS CHAIRS

SWIVEL AND GAS LIFT / FIVE STAR BASE
OPTIONAL TABLET ARM

FOCUS CHAIR



HOUSE FABRIC IS CAMIRA ERA. HOUSE VINYL IS PU-LEATHER-LOOK.
CHOICE OF WHITE OR BLACK SEAT SHELL
LEAD TIME IS 8 - 16 WEEKS DEPENDING ON ORDER CYCLE

VYSTAN INTERIORS: T 89417774 | E: SALES@VYSTAN.COM

FOCUS CHAIR



COLLECTION OF FOCUS CHAIRS SWIVEL AND FIXED HEIGHT FOUR STAR BASE



HOUSE FABRIC IS CAMIRA ERA. HOUSE VINYL IS PU-LEATHER-LOOK.
CHOICE OF WHITE OR BLACK SEAT SHELL
LEAD TIME IS 8 - 16 WEEKS DEPENDING ON ORDER CYCLE

VYSTAN INTERIORS: T 89417774 | E: SALES@VYSTAN.COM

FOCUS CHAIR

BY VYSTAN

vystan
OFFICE FURNITURE NT

COLLECTION OF FOCUS CHAIRS

SEMI STACKING



HOUSE FABRIC IS CAMIRA ERA
CHOICE OF WHITE OR BLACK SEAT SHELL
LEAD TIME IS 8 - 16 WEEKS DEPENDING ON ORDER CYCLE

VYSTAN INTERIORS: T 89417774 | E: SALES@VYSTAN.COM

Brochure is not for duplication without permission. Images are copyright. VYSTAN

FOCUS CHAIR



COLLECTION OF FOCUS CHAIRS SWIVEL AND FIXED HEIGHT ARMCHAIR FOUR STAR BASE

(FOCUS ARMCHAIR - POLISHED FOUR STAR BASE ONLY)

HOUSE FABRIC IS CAMIRA ERA. HOUSE VINYL IS PU-LEATHER-LOOK.
CHOICE OF WHITE OR BLACK SEAT SHELL
LEAD TIME IS 8 - 16 WEEKS DEPENDING ON ORDER CYCLE

VYSTAN INTERIORS: T 89417774 | E: SALES@VYSTAN.COM

COLLECTION OF FOCUS CHAIRS

HOUSE FABRIC: PU-LEATHER-LOOK

FOCUS CHAIR



HOUSE FABRIC PU-LEATHER LOOK. CHOICE OF WHITE OR BLACK SEAT SHELL
LEAD TIME IS 8 - 16 WEEKS DEPENDING ON ORDER CYCLE

VYSTAN INTERIORS: T 89417774 | E: SALES@VYSTAN.COM

FOCUS CHAIR

BY VYSTAN



vystan
OFFICE FURNITURE NT

HOUSE FABRIC CAMIRA ERA



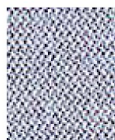
Allowance
CSE38 NEW



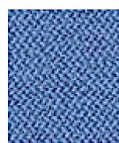
Memo
CSE46 NEW



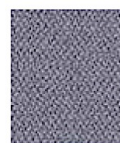
Quota
CSE41 NEW



Youth
CSE39 NEW



Chapter
CSE08



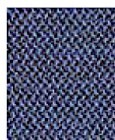
Forecast
CSE11



Prompt
CSE45 NEW



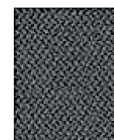
Perennial
CSE12



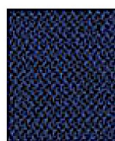
Range
CSE42 NEW



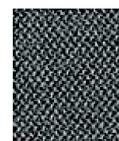
Late
CSE43 NEW



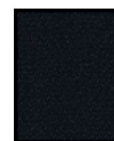
Present
CSE13



Maturity
CSE40 NEW



Elapse
CSE44 NEW



Forward
CSE14

Composition

100% Polyester
Non metallic dyestuffs

Environment

Certified to OEKO-TEX® Standard 100

Width

140 cm minimum

Weight

320 g/m² ±5% (448 g/lin.m ±5%)

Abrasion Resistance*

Heavy duty / 10 year guarantee
Independently certified to ≥100,000
Martindale cycles

Flammability

AS 1530.3 , ISO5660
EN 1021 - 1 (cigarette)
EN 1021 - 2 (match)
BS 7176 Low Hazard
EN 13501-1 Adhered Class B, s1, d0
EN 13501-1 Un-adhered Class C, s1, d0
Note: Flammability performance is dependent on components used. This range has been tested using 34-38 kg/m³ CMHR foam unless otherwise stated.

Light Fastness

5 (ISO 105 - B02)

Fastness to Rubbing

Wet: 4, Dry: 4 (ISO 105 - X12)

Cleaning

Washable to 60°C. Vacuum regularly.
Wipe clean with a damp cloth or shampoo
using proprietary upholstery shampoo.

FOCUS CHAIR

BY VYSTAN



vystan
OFFICE FURNITURE NT

HOUSE FABRIC CAMIRA ERA



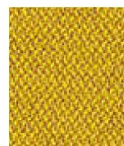
Transition
CSE30 NEW



Splitsecond
CSE31 NEW



Lifetime
CSE03



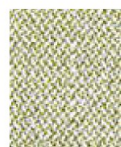
Occasion
CSE32 NEW



Period
CSE07



Event
CSE18



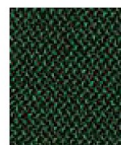
Analogue
CSE33 NEW



Endurance
CSE34 NEW



Timelapse
CSE16



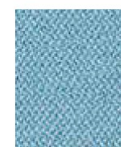
Signature
CSE35 NEW



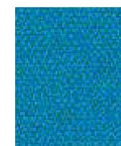
Notation
CSE36 NEW



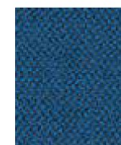
Rest
CSE37 NEW



Aeon
CSE20



Everlasting
CSE10



Stage
CSE15

Composition

100% Polyester
Non metallic dyestuffs

Environment

Certified to OEKO-TEX® Standard 100

Width

140 cm minimum

Weight

320 g/m² ±5% (448 g/lin.m ±5%)

Abrasion Resistance*

Heavy duty / 10 year guarantee
Independently certified to ≥100,000
Martindale cycles

Flammability

AS 1530.3, ISO5660
EN 1021 - 1 (cigarette)
EN 1021 - 2 (match)
BS 7176 Low Hazard
EN 13501-1 Adhered Class B, s1, d0
EN 13501-1 Un-adhered Class C, s1, d0
Note: Flammability performance is dependent on components used. This range has been tested using 34-38 kg/m³ CMHR foam unless otherwise stated.

Light Fastness

5 (ISO 105 - B02)

Fastness to Rubbing

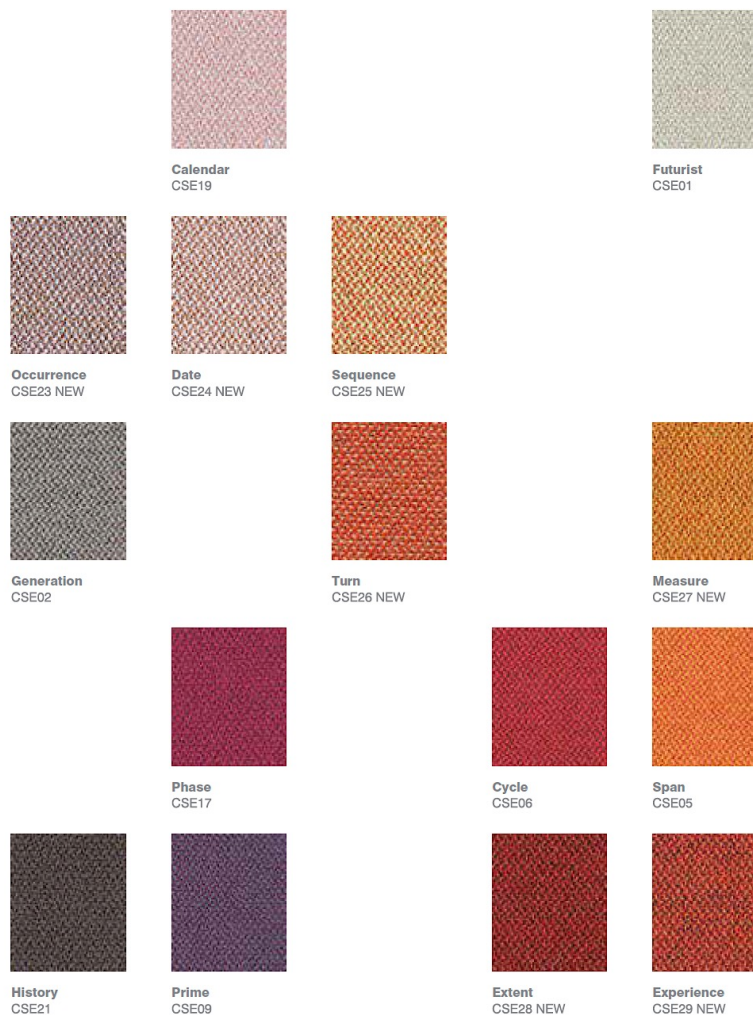
Wet: 4, Dry: 4 (ISO 105 - X12)

Cleaning

Washable to 60°C. Vacuum regularly.
Wipe clean with a damp cloth or shampoo
using proprietary upholstery shampoo.

FOCUS CHAIR

BY VYSTAN



HOUSE FABRIC CAMIRA ERA

Composition

100% Polyester
Non metallic dyestuffs

Environment

Certified to OEKO-TEX® Standard 100

Width

140 cm minimum

Weight

320 g/m² ±5% (448 g/lin.m ±5%)

Abrasion Resistance*

Heavy duty / 10 year guarantee
Independently certified to ≥100,000
Martindale cycles

Flammability

AS 1530.3, ISO5660
EN 1021 - 1 (cigarette)
EN 1021 - 2 (match)
BS 7176 Low Hazard
EN 13501-1 Adhered Class B, s1, d0
EN 13501-1 Un-adhered Class C, s1, d0
Note: Flammability performance is dependent on components used. This range has been tested using 34-38 kg/m³ CMHR foam unless otherwise stated.

Light Fastness

5 (ISO 105 - B02)

Fastness to Rubbing

Wet: 4, Dry: 4 (ISO 105 - X12)

Cleaning

Washable to 60°C. Vacuum regularly.
Wipe clean with a damp cloth or shampoo
using proprietary upholstery shampoo.